

SSD6444M

4-Bay U.2/U.3/M.2 NVMe RAID Enclosure



Quick Installation Guide

V1.00

SSD6444M Overview

The SSD6444M is a compact, high-performance NVMe storage solution for PC and Mac platforms. Each of the 4 drive bays features dedicated PCIe 3.0 x4 bus bandwidth to ensure each NVMe SSD operates at peak performance. Any PC or Mac platform with a free, dedicated PCIe 3.0 /4.0 x16 slot can now experience the true performance capabilities of NVMe technology.

System Requirements

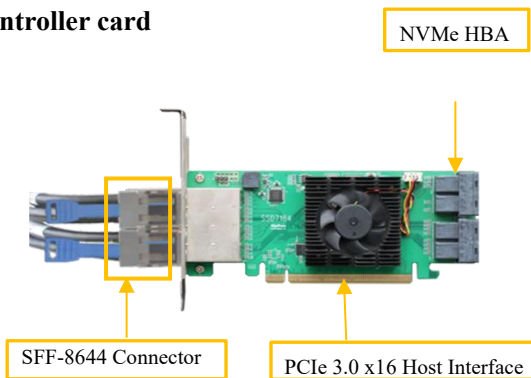
- Windows 11, 10 / Server 2022, 2019, 2016 / Microsoft Hyper-V
- RHEL/ Debian/ Ubuntu/ Fedora/ Proxmox/ Rocky Linux
(Linux kernel 3.10 and later)
- macOS 10.13 ~ macOS 13.x

Kit Contents

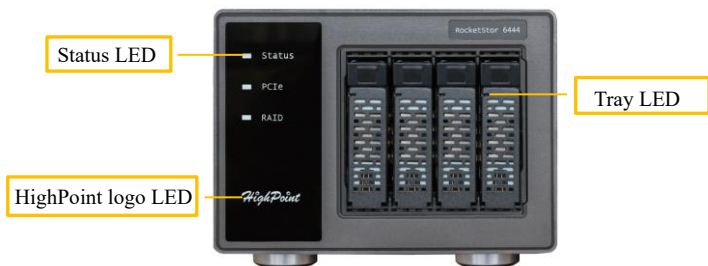
- 1x 4-Bay Enclosure
- 1x PCIe 3.0 x16 controller (external SFF-8644 port)
- 2x Mini-SAS 8644-8644-210 cables
- 4x U.2 to M.2 Trays
- 1x UL Power Cord
- 20x 2.5" SSD mounting screws
- 1x Quick Installation Guide
- 1x Low Profile Bracket

SSD6444M Hardware

Controller card



Enclosure Panel Layout-Front View



HighPoint logo LED

Solid Blue: Power on

Status LED

Solid Blue: Normal status

Solid Red: The temperature exceeds the Critical Threshold

Flash Red: The fan speed is lower than the Critical Threshold

Flash Yellow: The temperature exceeds the Warning Threshold or the fan speed is lower than the Warning Threshold

Tray LED

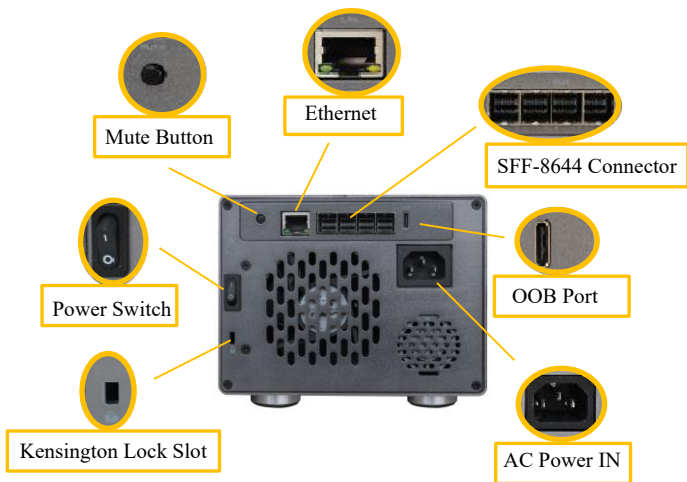
Lights out: The disk is not detected, or the disk adapter (U.2 to M.2) LED is not responding

Solid Blue: The disk is detected

Blue, flashing: Disk I/O

Solid Red: The disk has failed

Enclosure Panel Layout-Rear View



Kensington Lock Slot: Optional slot for Kensington Lock

Power Switch: Enclosure power switch

Mute Button: Mute the internal enclosure alarm buzzer

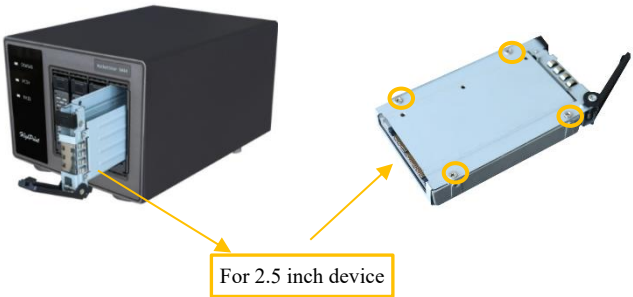
Ethernet: Can be used monitor the SSD6444 via an internet connection

4x SFF-8644 Connector: SFF-8644 cable connector for the NVMe HBA connection

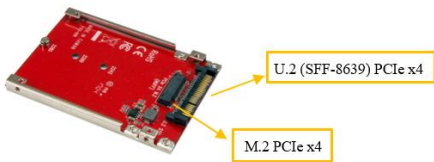
OOB Port (out-of-band): Implements the virtual serial port function, through which you can obtain the network IP address

AC Power IN: Connects to the AC power cord

Disk Tray



U.2 to M.2 Tray



SSD6444M Hardware Installation

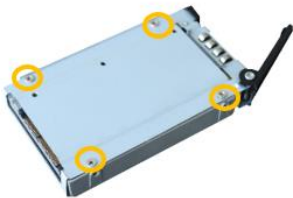
1. Insert the NVMe M.2 SSD into the 'M.2 to U.2 Adapter'.



Note1: Please make sure the M.2 connectors ("golden fingers") are clean before installation. Dust/debris or fingerprints may lead to connection/stability issues.

Note2: Make sure the SSDs are carefully, but securely installed into each M.2 port. Loose connections can cause a variety of stability and performance issues, and may ultimately result in data loss.

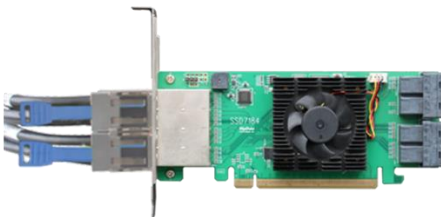
2. Carefully insert the 'M.2 to U.2 Adapter' into the disk tray and secure it with the provided mounting screws.



3. Place the Enclosure on a level surface and load each disk tray.



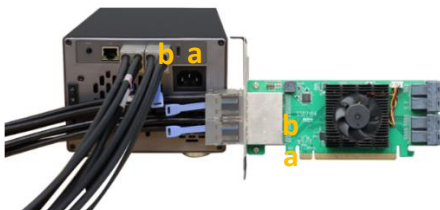
4. SFF-8644 to SFF-8644 cable connects to the SFF-8644 connector on the left side of the NVMe HBA.



5. The other end of the SFF-8644 to SFF-8644 connects to the Enclosure's SFF-8644 connector as illustrated below (a to a, and b to b), the Enclosure connects to M.2 NVMe, and connect to AC power.



Channel/ Port assignment:



6. Connect the SSD6444M's HBA into the PCIe 3.0/4.0 x16 slot of the motherboard;

Note: *Make sure the NVMe SSDs are installed prior to powering on and using the enclosure!*

Optional Certified Cable & Controller Accessories

Device Cables	
8644-8644-220 	SFF-8644 to SFF-8644 cable Length: 2M
8644-8644-210 	SFF-8644 to SFF-8644 cable Length: 1M

Resources

A variety of manuals, guides and FAQs are available for the SSD6444M RAID controller.

In addition, we recommend visiting the Software Downloads webpage for the latest drivers, management interfaces, and installation guides.

Software Download:

<https://www.highpoint-tech.com/nvme-2/ssd6444m>

Certified Accessories:

<https://www.highpoint-tech.com/nvme-accessories>

FAQ & Troubleshooting:

<https://www.highpoint-tech.com/support-and-services>

Customer Support

If you encounter any problems while utilizing the SSD6444M, or have any questions about this or any other HighPoint Technologies, Inc. product, feel free to contact our Customer Support Department or check our FAQ for more information.

Web Support:

<https://www.highpoint-tech.com/support-and-services>

HighPoint Technologies, Inc. websites:

<https://www.highpoint-tech.com>

© Copyright 2023 HighPoint Technologies, Inc. All rights reserved.